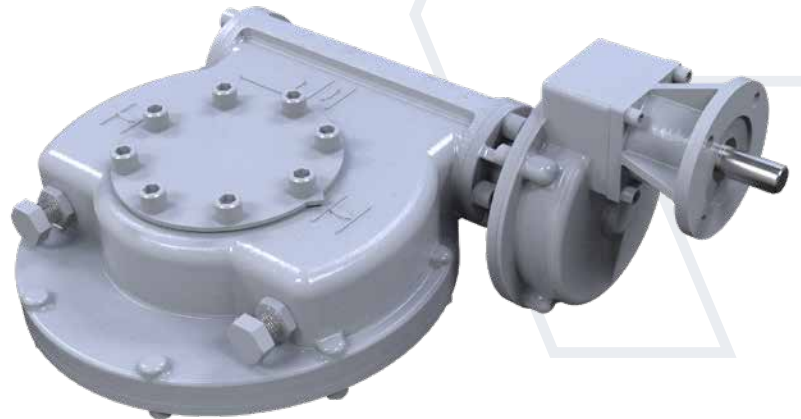




Keeping the World Flowing
for Future Generations



IW Mk2 quarter-turn worm gear operators have been designed to suit isolating duty motorised applications.

The gearboxes include low lead angle gearing designed to be inherently self-locking, and offer an increased torque output per size compared with the previous IW range. IW Mk2 gearboxes feature a removable output sleeve to facilitate bore and keyway machining, and an indexable baseplate to allow on-centre or off-centre mounting to the valve flange without special machining.

The standard operating temperature range is -40 to +250 °F (-40 to +120 °C), other temperature ranges are available on request. Gearbox input and output flanges are designed in accordance with ISO 5211. MSS SP-101 flanges are available as an alternative.

Application

Rotork IW Mk2 worm gear operators are quarter-turn devices intended for motorised operation of ball, plug and butterfly valves.

Features

- Totally enclosed gearing
- Grease filled for life and fully sealed to IP67 as standard
- Comprehensive gear ratios combined with a selection of auxiliary input spur gear reducers
- Angular contact bearings supporting worm shaft
- Removable and repositionable output sleeve
- Repositionable baseplate
- Adjustable mechanical stops (at 0° and 90° ±5°)
- Inherently self-locking gear componentry

IW Mk2

Quarter-turn worm gearboxes

Environmental specification

- IP67 as standard:
Suitable for submerged duty to a depth of 3 ¼ feet (1 metre) for 30 minutes
- Temperature as standard:
-40 to +250 °F (-40 to +120 °C)

Options

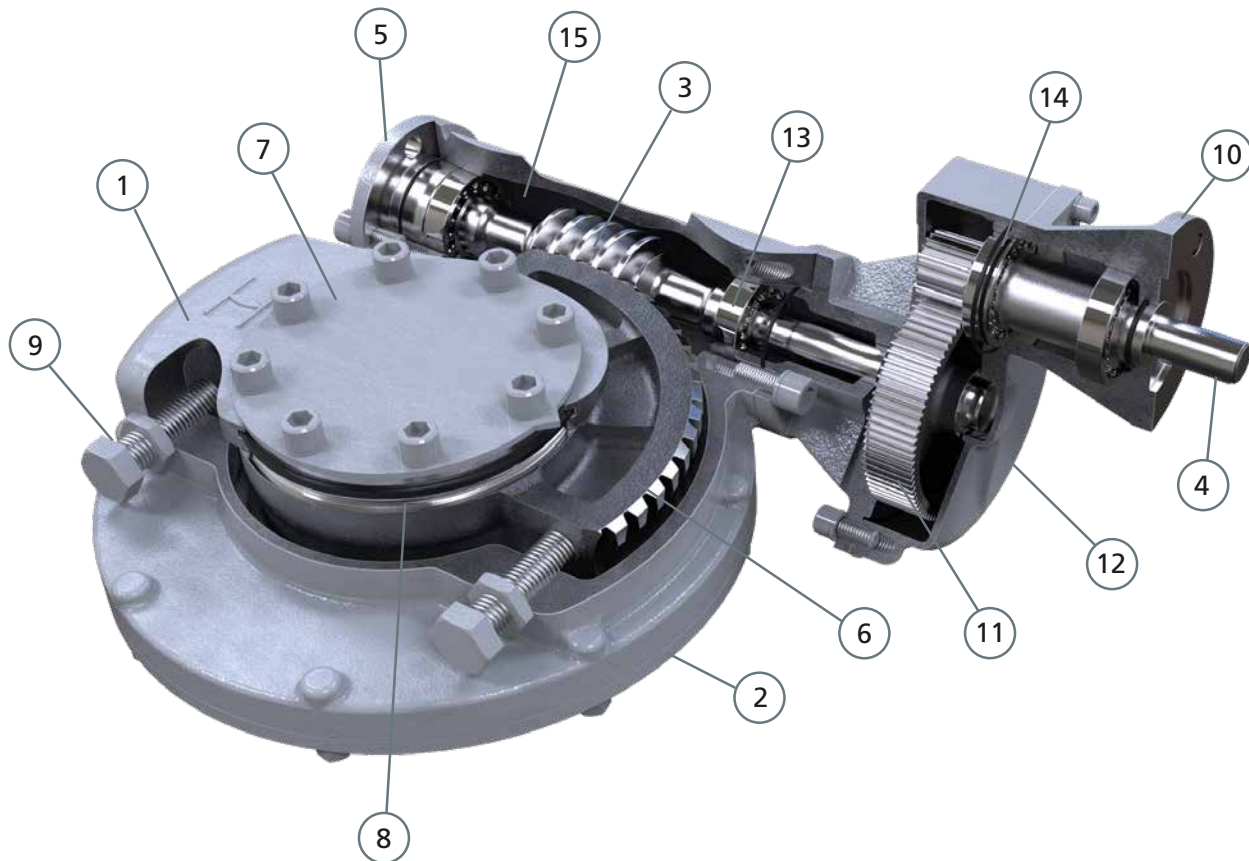
- Flexible input extensions
- IP68: 49 feet (15 metres) for 72 hours
- ATEX
- Buried, marinised, continuous submersible environments
- Stainless steel fasteners
- Low temperature option:
-76 to +250 °F (-60 to 120 °C)
- High temperature option:
-4 to +392 °F (-20 to +200 °C)

IW Mk2 quarter-turn worm gearboxes

Material specification

No.	Component	Material	UK standard	USA standard	DIN standard	ISO standard	
1	Gearcase	SG iron	BS1563 EN-GJS-450-10 BS1563 EN-GJS-400-15	ASTM A536 65-45-12	GGG40	ISO 1083 JS 450-10 ISO 1083 JS 400-15	
2	Baseplate	SG iron	BS1563 EN-GJS-450-10 BS1563 EN-GJS-400-15	ASTM A536 65-45-12	GGG40	ISO 1083 JS 450-10 ISO 1083 JS 400-15	
		Cast iron	BS1561 EN-GJL-250	ASTM A48 35B/40B	GG25	ISO 185 JL/250	
3	Worm shaft	Protected steel	BS970 708M40	AISI/SAE 4140	42 CrMo 4	ISO 683 42 CrMo 4	
4	Input shaft	Steel	BS970 605M36T	AISI/SAE 5140	41 Cr 4	ISO 683 41 Cr 4	
5	End cap	Steel	BS970 070M20 BS970 080M46	AISI/SAE 1023 AISI/SAE 1045	C22 C45	ISO 683 C 20 ISO 683 C 45 E4	
		Cast iron	BS1561 EN-GJL-250	ASTM A48 35B/40B	GG25	ISO 185 JL/250	
		SG iron	BS 1563 EN-GJS-400-15 BS 1563 EN-GJS-450-10	ASTM A536 65-45-12	GGG40	ISO 1083 JS 400-15 ISO 1083 JS 450-10	
6	Quadrant	SG iron	BS1563 EN-GJS-700-2	ASTM A536 100-70-03	GGG70	ISO 1083 JS 700-2	
7	Position indicator	Steel	BS970 070M20	AISI/SAE 1023	C 22	ISO 683 C 20	
8	Output sleeve	Steel	BS970 070M20 BS970 080M40 BS970 070M55	AISI/SAE 1023 AISI/SAE 1040 AISI/SAE 1055	C 22 C 40 C 55	ISO 683 C 20 ISO 683 C 40 E4 ISO 683 C 55 E4	
		Fasteners	Protected steel	BS3692			
		10	Input flange	SG iron	BS1563 EN-GJS-450-10 BS1563 EN-GJS-400-15	ASTM A536 65-45-12	GGG40
11	Reducer gearing	Steel	BS970 817M40T	AISI/SAE 4340	34 CrNiMo 6	ISO 683 36 CrNiMo 6	
12	Reducer gearcase	SG iron	BS1563 EN-GJS-450-10 BS1563 EN-GJS-400-15	ASTM A536 65-45-12	GGG40	ISO 1083 JS 450-10 ISO 1083 JS 400-15	
13	Bearings	Angular contact ball bearings					
14	Seals	Nitrile rubber					
15	Grease	Renolit CLX2					

Note: Because of the company's policy of continuous improvement, Rotork reserves the right to change specification details without prior notice.



IW Mk2 quarter-turn worm gearboxes

Standard input and output options

Gearbox	Ratio:1	Input mounting details shaft diameter (in)					Output mounting details				
		F10 FA10	F14 FA14	F16 FA16	F25 FA25	F30 FA30	Max bore rectangle key BS4235	Max square bore A/F	ISO flange standard baseplate	Standard baseplate max thread depth (in)	ISO flange large baseplate
IW3 / IW36	48	0.669*	-	-	-	-	1.772	1.417	F/FA 10 - 12	0.709	F/FA 14 - 16
IW4 / IW46	46	0.787	0.787	-	-	-	2.520	2.008	F/FA 10 - 14	0.630	F/FA 16
	92 to 276	0.787	0.787	-	-	-					
IW5 / IW52 / IW56	48	0.787	0.984	-	-	-	2.992	2.441	F/FA 14 - 16	0.787	F/FA 25
	96 to 288	0.787	0.787	-	-	-					
IW6 / IW66	76	0.787	1.181	1.181	-	-	4.016	3.280	F/FA 16 - 25	0.787 (F16), 0.630 (F25)	F/FA 30
	152 to 456	0.787	0.787	-	-	-					
IW7 / IW72 / IW76	64	0.787	1.181	1.181	1.181	-	5.354	4.283	F/FA 25 - 30	0.945	F/FA 35
	130 to 768	0.787	1.181	1.181	-	-					
IW8 / IW82 / IW86	64	-	-	1.575	1.575	-	6.181	4.839	F/FA 25 - 40	0.945 (F25), 1.181 (F30), 1.417 (F35 and F40)	F/FA 48
	130 to 768	0.787	1.181	1.575	1.969	-					
IW9 / IW96	58	-	-	1.575	1.969	-	7.008	5.201	F/FA 30 - 40	1.181 (F30), 1.417 (F35 and F40)	
	175 to 696	0.787	1.181	1.575	1.969	-					
	971 to 2900	0.787	1.181	1.575	1.969	-					
IW10 / IW106	74	-	-	-	1.969	1.969	7.992	6.008	F/FA 35 - 48	1.181 (F30), 1.417 (F35 and F40)	F/FA 60
	222 to 3700	0.787	1.181	1.575	1.969	-					
IW11	73	-	-	-	1.969	1.969	7.992	6.008	F/FA 40 - 48	1.417	
	219 to 3650	0.787	1.181	1.575	1.969	-					
IW116	73	-	-	-	1.969	1.969	7.992	6.008	F/FA 40 - 48	1.417	
	439 to 1093	0.787	1.181	1.575	1.969	-					
IW126	1440 to 6560	0.787	1.181	1.181	-	-	10.709	7.087	F/FA 40 - 60	1.496	
	70	-	-	-	2.953	2.953					
	280 to 1120	-	1.181	1.575	1.969	-					
IW13	70	-	-	-	2.953	2.953	10.709	7.087	F/FA 40 - 60	1.496	
	280 to 1120	-	1.181	1.575	1.969	-					
	1416 to 6720	0.787	1.181	1.181	-	-					

Note: Deeper thread depths are available on request using the large baseplate option.

Big bore input and output options

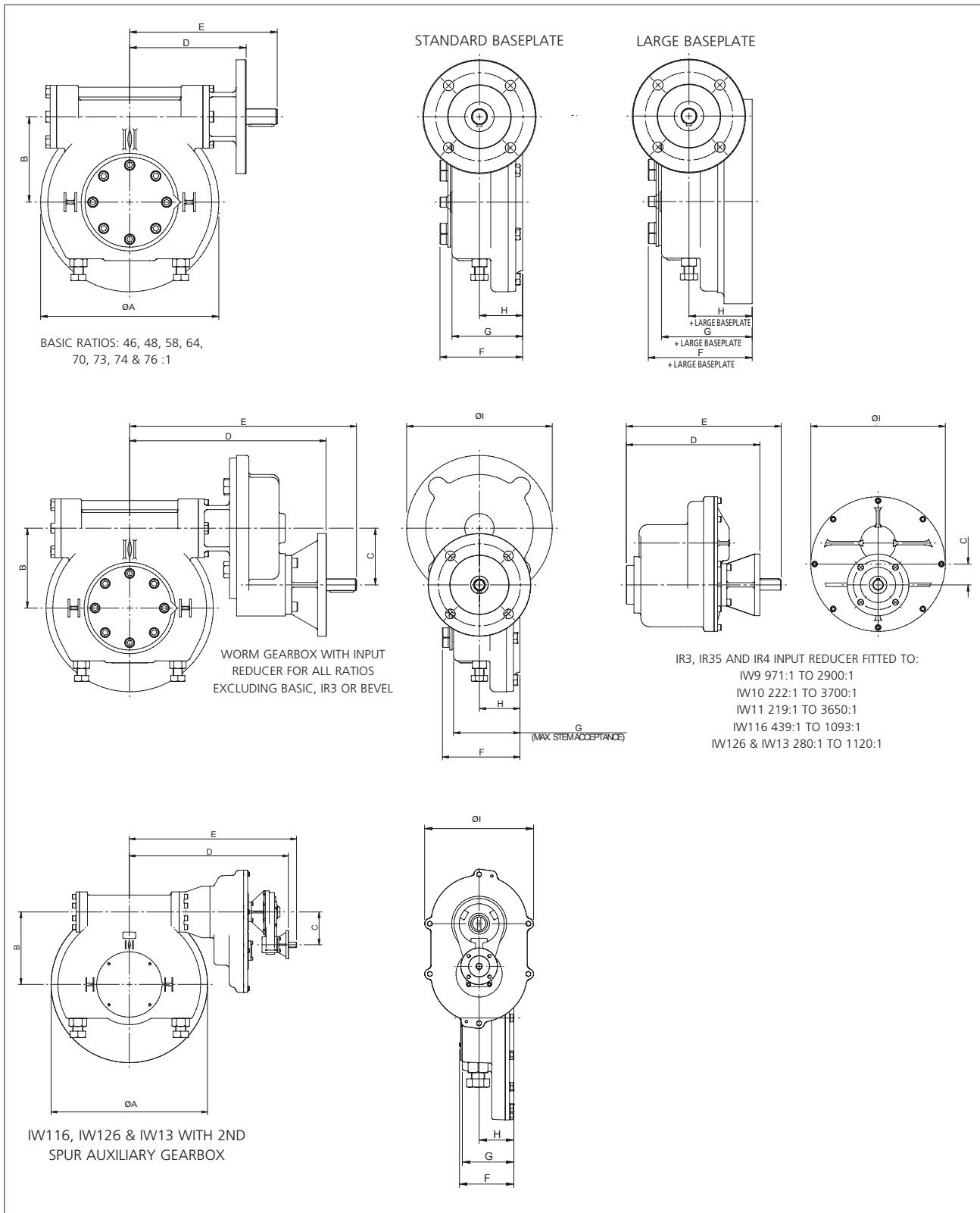
Gearbox	Ratio:1	Input mounting details shaft diameter (in)					Output mounting details				
		F10 FA10	F14 FA14	F16 FA16	F25 FA25	F30 FA30	Max bore rectangle key BS4235	Max square bore A/F	ISO flange standard baseplate	Standard baseplate max thread depth (in)	ISO flange large baseplate
IW11BB	73	-	-	-	1.969	1.969	10.630	7.480	F/FA 40 - 48	1.417	F/FA 60
	219 to 3650	0.787	1.181	1.575	1.969	-					
IW116BB	73	-	-	-	1.969	1.969	10.630	7.480	F/FA 40 - 48	1.417	
	439 to 1093	0.787	1.181	1.575	1.969	-					
	1440 to 6560	0.787	1.181	1.181	-	-					
IW126	70	-	-	-	2.953	2.953	12.008	9.016	F/FA 48-60	1.496	
	280 to 1120	-	1.181	1.575	1.969	-					
	1779 to 6720	0.787	1.181	1.181	-	-					
IW13	70	-	-	-	2.953	2.953	12.008	9.016	F/FA 48-60	1.496	
	280 to 1120	-	1.181	1.575	1.969	-					
	1416 to 6720	0.787	1.181	1.181	-	-					

* 0.787 in shaft adaptor available on request. Shaft tolerance -0.002" (-0.05)

Note: Deeper thread depths are available on request using the large baseplate option.

IW Mk2 quarter-turn worm gearboxes

Dimensional drawings



IW Mk2 quarter-turn worm gearboxes

Dimension table

Gearbox	Ratio : 1	ØA	B	C	D	E	F	G	H	ØI	large baseplate additional thickness	Weight lbs (kg)
IW3 / IW36	48	6.772	2.992		4.646	6.220	3.583	2.913	1.929		0.866	24 (11)
IW4 / IW46	46	8.583	4.016		5.951	7.165	4.173	3.346	1.969		0.984	46 (21)
	92 - 184	8.583	4.016	2.520	10.591	12.598	4.173	3.346	1.969	7.480		73 (33)
	233 - 276	8.583	4.016	3.780	11.457	13.465	4.173	3.346	1.969	9.763		99 (45)
IW5 / IW52 / IW56	48	11.220	5.354		7.323	9.291	5.197	4.488	2.717		0.236	97 (44)
	96, 144, 192	11.220	5.354	2.520	12.323	14.331	5.197	4.488	2.717	7.480		121 (55)
	243, 288	11.220	5.354	3.780	13.189	15.197	5.197	4.488	2.717	9.764		150 (68)
IW6 / IW66	76	14.764	7.008		7.323 (7.717 for F/FA10)	9.291	5.472	4.449	2.756		-	150 (68)
	152 - 304	14.764	7.008	2.520	12.323	14.331	5.472	4.449	2.756	7.480		174 (79)
	385 - 456	14.764	7.008	3.780	13.465	15.472	5.472	4.449	2.756	9.764		198 (90)
IW7 / IW72 / IW76	64	17.717	8.268		10.630	12.593	6.732	5.512	3.386		1.220	284 (129)
	130 - 384	17.717	8.268	4.685	18.110	20.512	6.732	5.512	3.386	11.417		328 (149)
	505 - 768	17.717	8.268	7.047	18.465	20.866	6.732	5.512	3.386	16.063		399 (181)
IW8 / IW82 / IW86	64	20.472	9.685		12.047	14.370	7.559	6.299	3.898		1.496	410 (186)
	130 - 384	20.472	9.685	4.685	19.528	21.929	7.559	6.299	3.898	11.417		487 (221)
	505 - 768	20.472	9.685	7.047	19.882	22.283	7.559	6.299	3.898	16.063		545 (247)
IW9 / IW96	58	23.465	10.984		14.606	18.937	7.874	6.614	3.898		1.063	613 (278)
	175 - 696	23.465	10.984	7.047	22.362	24.842	7.874	6.614	3.898	16.063		739 (335)
	971 - 2,900	23.465	10.984	2.323	23.819	22.62	7.874	6.614	3.898	15.039		754 (342)
IW10 / IW106	74	28.937	13.504		15.630	19.961	8.504	7.087	4.331		1.260	864 (392)
	222 - 3,700	28.937	13.504	2.323	24.843	27.244	8.504	7.087	4.331	15.039		996 (452)
IW11 / IW11BB	73	31.299	15.000		16.299	20.630	9.714	7.874	4.724		-	1,069 (485)
	219 - 3,650	31.299	15.000	2.323	25.512	27.913	9.714	7.874	4.724	15.039		1,202 (545)
IW116 / IW116BB	73	31.299	15.000		16.299	20.630	9.714	7.874	4.724		-	1,069 (485)
	439 - 1,093	31.299	15.000	2.323	25.512	27.913	9.714	7.874	4.724	15.039		1,210 (549)
IW116 with 2nd spur auxiliary	1,440 - 6,560	31.299	15.000	8.031	30.945	32.992	9.714	7.874	4.724	15.039	-	1,287 (584)
IW126 / IW13	70	38.268	17.717		18.110	24.016	10.236	9.882	6.535		-	1,980 (898)
	280 - 1,120	38.268	17.717	9.449	33.504	35.827	10.236	9.882	6.535	20.472		2,575 (1,168)
IW126 with 2nd spur auxiliary	1,779 - 6,720	38.268	17.717	8.031	38.937	40.906	10.236	9.882	6.535	20.472	-	2,652 (1,203)
IW13 with 2nd spur auxiliary	1,416 - 6,720	38.268	17.717	12.008	39.409	41.378	10.236	9.882	6.535	20.472	-	2,685 (1,218)

All dimensions in inches.

IW Mk2 quarter-turn worm gearboxes

Customer drive and orientation options

IW3 TO IW13 46:1 TO 76:1

INPUT SHAFT PROJECTION WITHOUT INPUT REDUCER

(A2) (B1)

(A1) (B2)

DRIVE OPTIONS

KEYWAY POSITIONS WITH GEARBOX IN CLOSED POSITION

SQUARE BORE

PARALLEL (FLATS ON CENTRE)

DIAGONAL (FLATS OFF CENTRE)

SLOTTED BORE

FLATS ACROSS FLOW LINE

FLATS ON FLOW LINE

INPUT SHAFT PROJECTION

(A2) (B1)

(A1) (B2)

IW4 TO IW9 UP TO 696:1

IW126 & IW13 RATIOS 280:1 TO 1120:1

INPUT REDUCER ORIENTATION POS. A

WEST NORTH EAST SOUTH

INPUT REDUCER ORIENTATION POS. B

NORTH EAST SOUTH WEST

INPUT SHAFT PROJECTION

(A2) (B1)

(A1) (B2)

IW9 971:1 TO 2900:1 **IW10 & IW11 219:1 TO 3700:1** **IW116 439:1 TO 1093:1**

IR3 INPUT REDUCER ORIENTATION POS. A

WEST NORTH EAST SOUTH

IR3 INPUT REDUCER ORIENTATION POS. B

NORTH EAST SOUTH WEST

INPUT SHAFT PROJECTION

(A2) (B1)

(A1) (B2)

IW116*, IW126 & IW13 WITH 2ND SPUR AUXILIARY GEARBOX

2ND AUXILIARY GEARBOX ORIENTATION POS. A WITH 1ST AUXILIARY SHOWN IN EAST DEFAULT ORIENTATION EAST/EAST

WEST NORTH EAST SOUTH

2ND AUXILIARY GEARBOX ORIENTATION POS. B WITH 1ST AUXILIARY SHOWN IN WEST DEFAULT ORIENTATION WEST/WEST

NORTH EAST SOUTH WEST

*IW116 1ST AUXILIARY SPUR CANNOT BE MOUNTED EAST FOR POSITION A OR MOUNTED WEST FOR POSITION B, DEFAULT ORIENTATION POS. B EAST/WEST.

A1 = Anticlockwise in, clockwise out. A2 = Clockwise in, clockwise out. B1 = Clockwise in, clockwise out. B2 = Anticlockwise in, clockwise out.

IW Mk2 quarter-turn worm gearboxes

Sizing chart

Gearbox	Ratio :1										Rated output torque ft-lb	Maximum input torque ft-lb										Average static MA* ±10%																																																																																																																																																																																																																																																																																																																																																																																																																																																																																																																																																																																																																																																																																																																																																																																										
	48	56	63	71	80	90	100	112	126	144		53.8	62.2	70.6	80.0	90.4	102.8	118.2	136.6	158.0	183.4	15	17	19	22	25	28	32	36	40	45	50	56	63	71	80	90	100	112	126	144	162	183	207	236	270	308	350	400	456	528	612	714	834	984	1152	1350	1584	1854	2172	2556	3000	3528	4152	4896	5784	6840	8100	9576	11400	13608	16224	19296	22872	27000	32736	39240	46680	55200	64944	76080	88800	104160	122400	143880	168960	198000	231360	270000	314400	365160	423000	488640	573600	678480	804000	950400	1119600	1314000	1537200	1792800	2085600	2421600	2808000	3250800	3756000	4339200	5008000	5778000	6666000	7680000	8832000	10140000	11724000	13500000	15492000	17736000	20268000	23136000	26392000	30096000	34308000	39108000	44568000	50760000	57768000	65664000	74544000	84504000	95640000	108048000	121824000	137080000	153920000	172440000	192720000	214960000	239320000	265920000	294840000	326280000	360360000	397200000	437040000	479920000	536080000	595680000	658920000	726000000	797040000	872280000	951840000	1035840000	1124400000	1217600000	1315600000	1418400000	1526000000	1638400000	1755600000	1878000000	2005600000	2138400000	2276400000	2419600000	2568000000	2721600000	2880400000	3044400000	3213600000	3388000000	3568000000	3753600000	3944800000	4141600000	4344000000	4552000000	4765600000	4984800000	5209600000	5440000000	5676000000	5917600000	6174800000	6437600000	6706000000	6980000000	7259600000	7544800000	7835600000	8132000000	8434000000	8741600000	9054800000	9373600000	9698000000	10028000000	10363200000	10704000000	11050400000	11402400000	11760000000	12123200000	12492000000	12866400000	13246400000	13632000000	14023200000	14420000000	14822400000	15230400000	15644000000	16063200000	16488000000	16918400000	17354400000	17796000000	18243200000	18696000000	19154400000	19618400000	20088000000	20563200000	21044000000	21530400000	22022400000	22520000000	23023200000	23532000000	24046400000	24566400000	25092000000	25623200000	26160000000	26702400000	27250400000	27804000000	28363200000	28928000000	29498400000	30074400000	30656000000	31243200000	31836000000	32434400000	33038400000	33648000000	34263200000	34884000000	35510400000	36142400000	36780000000	37423200000	38072000000	38726400000	39386400000	40052000000	40723200000	41400000000	42083200000	42772000000	43466400000	44166400000	44872000000	45584000000	46301600000	47024800000	47753600000	48488000000	49228000000	49973200000	50724000000	51480000000	52241600000	53008800000	53781600000	54560000000	55344000000	56133600000	56928800000	57729600000	58536000000	59348000000	60165600000	60988800000	61817600000	62652000000	63492000000	64337600000	65188800000	66045600000	66908000000	67776000000	68650400000	69530400000	70416000000	71307200000	72204000000	73106400000	74014400000	74928000000	75847200000	76772000000	77702400000	78638400000	79580000000	80527200000	81480000000	82438400000	83402400000	84372000000	85347200000	86328000000	87314400000	88306400000	89304000000	90307200000	91316000000	92330400000	93350400000	94376000000	95407200000	96444000000	97486400000	98534400000	99588000000	100648000000	101713600000	102784800000	103861600000	104944000000	106032000000	107126400000	108226400000	109332000000	110443200000	111560000000	112683200000	113812000000	114946400000	116086400000	117232000000	118383200000	119539200000	120700400000	121866800000	123038400000	124215200000	125397200000	126584400000	127776800000	128974400000	130177200000	131385200000	132598400000	133816800000	135040400000	136269200000	137503200000	138742400000	139986800000	141236400000	142491200000	143751200000	145016400000	146286800000	147562400000	148843200000	150129200000	151420400000	152716800000	154018400000	155325200000	156637200000	157954400000	159276800000	160604400000	161937200000	163275200000	164618400000	165966800000	167320400000	168679200000	170043200000	171412400000	172786800000	174166400000	175551200000	176941200000	178336400000	179736800000	181142400000	182553200000	183969200000	185390400000	186816800000	188248400000	189685200000	191127200000	192574400000	194026800000	195484400000	196947200000	198415200000	199888400000	201366800000	202850400000	204339200000	205833200000	207332400000	208836800000	210346400000	211861200000	213381200000	214906400000	216436800000	217972400000	219513200000	221059200000	222610400000	224166800000	225728400000	227295200000	228867200000	230444400000	232026800000	233614400000	235207200000	236805200000	238408400000	240016800000	241630400000	243249200000	244873200000	246502400000	248136800000	249776400000	251421200000	253071200000	254726400000	256386800000	258052400000	259723200000	261409200000	263100400000	264796800000	266498400000	268205200000	269917200000	271634400000	273356800000	275084400000	276817200000	278555200000	280298400000	282046800000	283800400000	285559200000	287323200000	289092400000	290866800000	292646400000	294431200000	296221200000	298016400000	299816800000	301622400000	303433200000	305249200000	307070400000	308896800000	310728400000	312565200000	314407200000	316254400000	318106800000	319964400000	321827200000	323695200000	325568400000	327446800000	329330400000	331219200000	333113200000	335012400000	336916800000	338826400000	340741200000	342661200000	344586400000	346516800000	348452400000	350393200000	352339200000	354290400000	356246800000	358208400000	360175200000	362147200000	364124400000	366106800000	368094400000	370087200000	372085200000	374088400000	376096800000	378110400000	380129200000	382153200000	384182400000	386216800000	388256400000	390301200000	392351200000	394406400000	396466800000	398532400000	400603200000	402679200000	404760400000	406846800000	408938400000	411035200000	413137200000	415244400000	417356800000	419474400000	421597200000	423725200000	425858400000	427996800000	430140400000	432289200000	434443200000	436602400000	438766800000	440936400000	443111200000	445291200000	447476400000	449666800000	451862400000	454063200000	456269200000	458480400000	460696800000	462918400000	465145200000	467377200000	469614400000	471856800000	474104400000	476357200000	478615200000	480878400000	483146800000	485420400000	487699200000	489983200000	492272400000	494566800000	496866400000	499171200000	501481200000	503796400000	506116800000	508442400000	510773200000	513109200000	515450400000	517796800000	520148400000	522505200000	524867200000	527234400000	529606800000	531984400000	534367200000	536755200000	539148400000	541546800000	543950400000	546359200000	548773200000	551192400000	553616800000	556046400000	558481200000	560921200000	563366400000	565816800000	568272400000	570733200000	573199200000	575670400000	578146800000	580628400000	583115200000	585607200000	588104400000	590606800000	593114400000	595627200000	598145200000	600668400000	603196800000	605730400000	608269200000	610813200000	613362400000	615916800000	618476400000	621041200000	623611200000	626186400000	628766800000	631352400000	633943200000	636539200000	639140400000	641746800000	644358400000	646975200000	649597200000	652224400000	654856800000	657494400000	660137200000	662785200000	665438400000	668096800000	670760400000	673429200000	676103200000	678782400000	681466800000	684156400000	686851200000	689551200000	692256400000	694966800000	697682400000	700403200000	703129200000	705860400000	708596800000	711338400000	714085200000	716837200000	719594400000	722356800000	725124400000	727897200000	730675200000	733458400000	736246800000	739040400000	741839200000	744643200000	747452400000	750266800000	753086400000	755911200000	758741200000	761576400000	764416800000	767262400000	770113200000	772969200000	775830400000	778696800000	781568400000	784445200000	787327200000	790214400000	793106800000	796004400000	798907200000	801815200000	804728400000	807646800000	810570400000	813499200000	816433200000	819372400000	822316800000	825266400000	828221200000	831181200000	834146400000	837116800000	840092400000	843073200000	846059200000	849050400000	852046800000	855048400000	858055200000	861067200000	864084400000	867106800000	870134400000	873167200000	876205200000	879248400000	882296800000	885350400000	888409200000	891473200000	894542400000	897616800000	900696400000	903781200000	906871200000	909966400000	913066800000	916172400000	919283200000	922399200000	925520400000	928646800000	931778400000	934915200000	938057200000	941204400000	944356800000	947514400000	950677200000	953845200000	957018400000	960196800000	963380400000	966569200000	969763200000	972962400000	976166800000	979376400000	982591200000	985811200000	989036400000	992266800000	995502400000	998743200000	1002089200000	1005440400000	1008796800000	1012158400000	1015525200000	1018897200000	1022274400000	1025656800000	1029044400000	1032437200000	1035835200000	1039238400000	1042646800000	1046060400000	1049479200000	1052903200000	1056332400000	1059766800000	1063206400000	1066651200000	1070101200000	1073556400000	1077016800000	1080482400000	1083953200000	1087429200000	1090910400000	1094396800000	1097888400000	1101385200000	1104887200000	1108394400000	1111906800000	1115424400000	1118947200000	1122475200000	1126008400000	1129546800000	1133090400000	1136639200000	1140193200000

A full listing of the Rotork sales
and service network is available
on our website.

www.rotork.com

Headquarters

Rotork Gears UK
tel +44 (0)113 2567922
email sales@rotorkgears.com

Corporate Headquarters

Rotork plc
tel +44 (0)1225 733200
email mail@rotork.com

rotork®

Electric Actuators and Control Systems
Fluid Power Actuators and Control Systems
Gearboxes and Gear Operators
Precision Control and Indication
Projects, Services and Retrofit